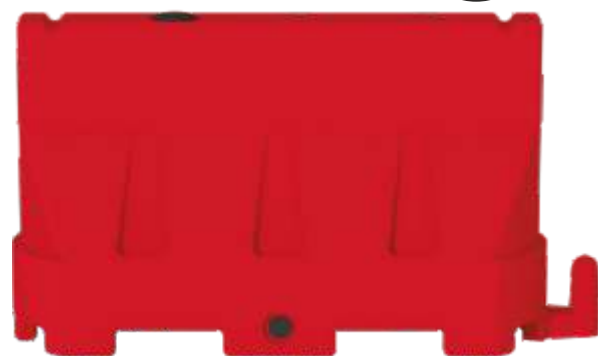
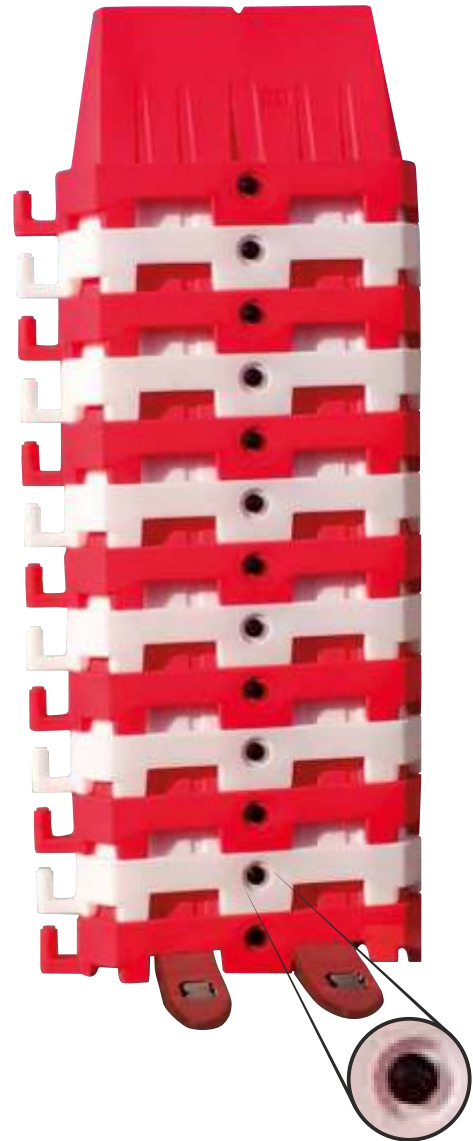


Water Fill Barriers

- Unit size: 1000mm long x 700mm high x 400mm wide.
- Filled weight: 80kg
- Barriers are stackable giving reduction in space required for storage and reduction in transport of barrier.
- Easy to use linking system (male and female) which enables straight or curved configurations.
- Easy to fill via lid on top.
- Easy to drain via plug at bottom.
- Available in red or white.
- Excellent impact resistance.



Knocktopher, Co. Kilkenny, R95 TW83

T: (056) 7768702 | F: (056) 7768854
email: sales@hsd.ie | www.hsd.ie